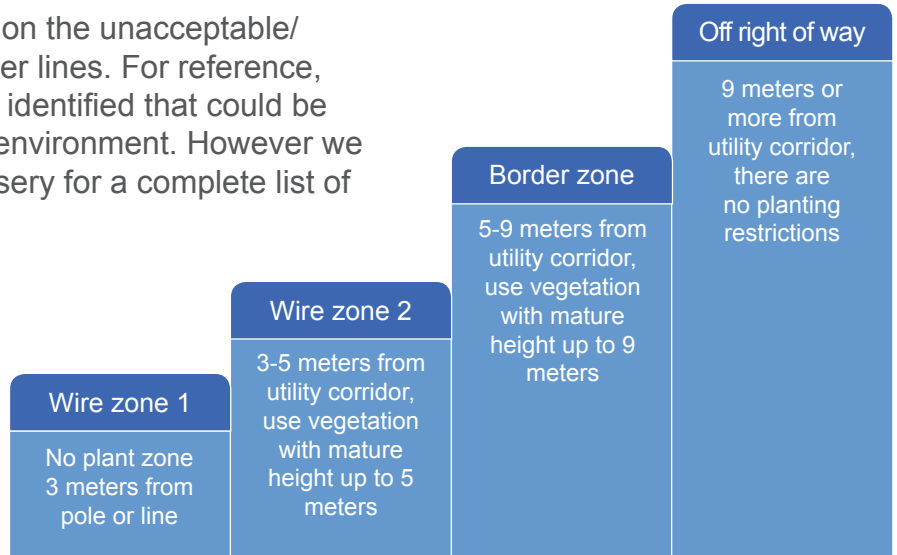




Planting Smart Zones and Recommended Trees

This safety sheet provides information on the unacceptable/ acceptable planting zones around power lines. For reference, recommended tree species have been identified that could be considered for planting in a powerline environment. However we recommend you consult your local nursery for a complete list of potentials.

For easy reference the Planting Smart Zone diagram identifies designated planting distances from powerlines and below are recommendations of trees and shrubs you might consider for planting in the various zones.



Wire Zone 2

3 to 5 meters on either side of the power line corridor

Use vegetation with mature height up to 5 meters:

- Amur Maple**
- Caragana**
- Nanking Cherry**
- Cotoneaster**
- Dogwood**
- Honeysuckle**
- Common lilac**
- Hardy roses**

Border zone

5 to 9 meters from the power line corridor

Consider trees or shrubs with a mature height of up to 9 meters.

Recommended:

- Pincherry**
- Chokecherry**
- Flowering crabapple**
- Tartarian Maple**
- Hawthorn**
- Mountain Ash**
- French pussy willow**
- Mugo pine**
- Nannyberry**
- Elder**
- Saskatoon**
- Upright juniper**

Off right of way

9 meters and more away from the power line corridor

There are no restrictions and possible tree selections include, but are not limited to the following:

- Northwest Poplar**
- Laurel Leaf Willow**
- Golden Willow**
- Manitoba Maple**
- Green Ash**
- Mayday**
- Spruce (white or blue)**
- Birch**
- Scots, Jack or Lodgepole Pine**
- Larch**